

**Media Contact**

Debra Ford  
debra@fordandcompany.com  
281-415-0673  
High resolution images available

2305 Dunlavy, Houston, Texas 77006 (713) 522-2409  
www.archwaygallery.com

**Archway Gallery presents  
Ink&Image 2019, Red...or not**

Featuring Printmaking by Cromwell, Gray, Perkins, Riccetti, Slaby, and Spencer

**Group Show**

June 1 - July 2, 2019

**Opening Reception**

DATE: Saturday, June 1, 2019  
TIME: 5 – 8 p.m., Artist Talk at 6:30 p.m.  
LOCATION: Archway Gallery  
2305 Dunlavy  
Houston, TX 77006

Complimentary Valet Parking &  
Light Refreshments

**Celebration Night**

Saturday, June 29, 2019  
5 – 8 p.m.



**Ants: 01**  
by Kevin Cromwell

**Houston, Texas** (April 29, 2019) **Ink&Image 2019, Red...or not**, will be on view at Archway Gallery June 1 – July 2, 2019. Six Archway Gallery artists will exhibit prints as part of the City-wide PrintHouston 2019 celebration of printmaking through exhibits, demonstrations, lectures, and studio tours. Exhibitors are Kevin Cromwell, Mary Lee Gray, donna e perkins, Shirl Riccetti, John Slaby, and Liz Conces Spencer. The artists will be present at the opening reception on Saturday, June 1, 2019 from 5 - 8 p.m. to visit with viewers and explain their printmaking processes, with an Artist Talk at 6:30 p.m.

The printmakers will use the exhibition subtitle, **RED...or not**, as a point of inspiration for producing prints in both traditional methods, such as relief, intaglio, and planographic, as well as exploration of inventive means of printmaking on paper or other surfaces. Their prints follow an ancient tradition of making marks to respond to being alive; and in doing so, make art. The exhibit will highlight the expressive power of the technique and the diversity of methods used in making a print.

**Kevin Cromwell** has been creating and showing prints in the Houston area for over six years. He has worked with the PrintMatters organization to help expand the printmaking arts in Houston. Cromwell uses relief printing to create works, often in large scale. Starting with the image, he allows the material of the plate and his tools to influence the final work. There is always a small amount of risk in the carving process, which keeps the work interesting.



**Kevin Cromwell**



**Growing Up**  
by Mary Lee Gray

**Mary Lee Gray** uses the tools of printmaking, including wood and linoleum grounds, cutting tools, inks, and Asian papers to explore the nuances implied in *Red...or not*. Her woodcuts and linocuts combine transparency with layers of collage to convey the complexity of the three words.

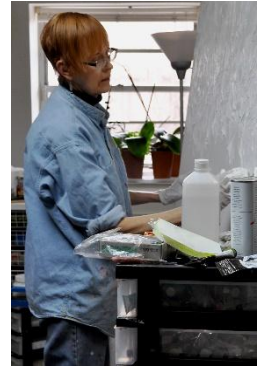


**Mary Lee Gray**



**Petite Topography—Alluvia**  
by donna e perkins

Primarily a painter, **donna e perkins** brings her love of experimentation to printmaking. The nature of paint and of ink fascinate her. She plays with viscosity, metallic reflection, and transparency. In donna's *Petite Topography Series* of monotypes, she finds the fractal-like surfaces obtained when pulling the paper from the plate are rich and mesmerizing. She has come to believe that chance plays a great role in her art and in her life. She also enjoys the surfaces which can be obtained by collagraphy. Creating a collagraph plate is an exercise in experimentation. For a collagraph print, one glues a collage of materials onto a base which is inked and printed.



**donna e perkins**

With an extensive background in drawing, **Shirl Riccetti** has always found printmaking to be a fascinating addition to her other art work. She has experimented with most of the printmaking techniques but always finds herself returning to foam printing. For Riccetti, it is the step-by-step process that fully entices the artist into the joys of printmaking.

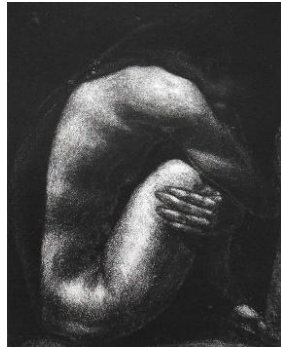


**Shirl Riccetti**



**There's Always One**  
by Shirl Riccetti

**John Slaby** became involved in etching in 2016. Working mainly with non-hazardous electrochemical methods on zinc plates, the works are a combination of etching and aquatint. Primarily an oil painter, John has used this medium as an extension of his work with the human figure. He has been a member of Archway Gallery since 1993 and currently serves as the Treasurer.



**Etch #7**  
by John Slaby



**John Slaby**

**Liz Conces Spencer** will be exhibiting a retrospective of small screen prints from the 1980s that explore relationships between lyrical abstract colors and shapes. A high school art teacher at the time, Spencer had periods between and after classes to develop her ideas and print small editions, utilizing the school's darkroom and keying off essential skills being offered to her students. Her interest was in building imagery in a totally freeform way, developing the work much as an abstract drawing or painting is created. Each color was applied once, twice, or even three separate times to achieve the compositional effect that completed the work. The resulting editions were strongly related to the artist's developing color field works



**Liz Conces Spencer**



**Vegetation**  
by Liz Conces Spencer

in other media.

**ABOUT ARCHWAY GALLERY:** *Artist owned and operated since 1976.* Archway Gallery, one of Houston's and the nation's oldest artist-owned and operated galleries, is located at 2305 Dunlavy and is open Monday – Saturday from 10 a.m. – 6 p.m. and Sunday from 1 – 5 p.m. Since 1976, Archway Gallery has been exhibiting the work of the area's finest artists, providing a great selection of affordable, high quality art including sculpture, pottery and painting in a variety of media and styles. One of the more than 30 member artists is always on site, providing visitors a unique experience to meet the artists who created the work, offering a personal insight into the process. Each month features a special exhibition highlighting member artist(s). The public is invited to the monthly opening receptions that celebrate the new installations and work, usually held the first Saturday of each month from 5 – 8 p.m. In addition to monthly exhibitions, Archway also hosts a variety of demonstrations and monthly readings for local writers and authors, as well as a "Tea and Tour" program, providing visitors with a free artist-led tour of the current exhibition, followed by tea and refreshments. With 30 artist-members, Archway Gallery is THE destination in the Houston area for affordable art directly from the artist. For more information, visit [ArchwayGallery.com](http://ArchwayGallery.com) or call 713.522.2409. Like Archway Gallery on [Facebook](https://www.facebook.com/ArchwayGallery).